

D6N WH

Waste Handler



Supplement

Note: For standard specifications and features, refer to the standard Caterpillar® Specalogs for this machine.

Engine

Engine Model	Cat® 3126B	
Flywheel Power	108 kW	145 hp

Weights

Operating Weight XL-DS	17 338 kg	38,224 lb
Operating Weight LGP-DS	19 257 kg	42,454 lb

Blade

Blade Type	SU, VPAT
------------	----------

D6N WH Waste Handler

Specifications

Engine

Engine Model	Cat 3126B	
Flywheel Power	108 kW	145 hp
Number of Cylinders	6	
Bore	110 mm	4.33 in
Stroke	127 mm	5 in
Displacement	7.2 L	439 in ³

- Rating at 2200 rpm.
- Engine meets exhaust emission regulations for EPA Tier 2, EU Stage II, and Japan MOC Step 2.
- No derating required up to 4600 m (15,100 ft) altitude, beyond 4600 m (15,100 ft) automatic derating occurs.

Service Refill Capacities

Fuel Tank	299 L	79 gal
Cooling System	40.7 L	10.75 gal
Final Drives (each)	7 L	1.8 gal
Hydraulic Tank	29.5 L	7.8 gal

Weights

Operating Weight XL-DS	17 338 kg	38,224 lb
Operating Weight LGP-DS	19 257 kg	42,454 lb
Shipping Weight XL-DS	17 006 kg	37,492 lb
Shipping Weight LGP-DS	18 925 kg	41,722 lb

- Operating Weight: Includes hydraulic controls, lubricants, coolant, 100% fuel, ROPS, FOPS cab, VPAT blade, Basic Waste Handling Arrangement and rear striker bar plus operator.
- Shipping Weight: Includes hydraulic controls, lubricants, coolant, 5% fuel, ROPS, FOPS cab, VPAT blade, Basic Waste Handling Arrangement and rear striker bar.

Dimensions

Ground Clearance	424 mm	16.7 in
Width without Blade	2492 mm	98 in
Width with Blade	2960 mm	116.5 in
Height ROPS/Cab	3083 mm	10.11 ft
Overall Length Basic Tractor	3.74 m	12.27 ft
Overall Length with Blade	5.53 m	18.1 ft

- Width with Blade: XL tractor, VPAT blade angled at 25°.
- Overall Length with Blade: XL tractor, VPAT blade angled at 25°.

Undercarriage

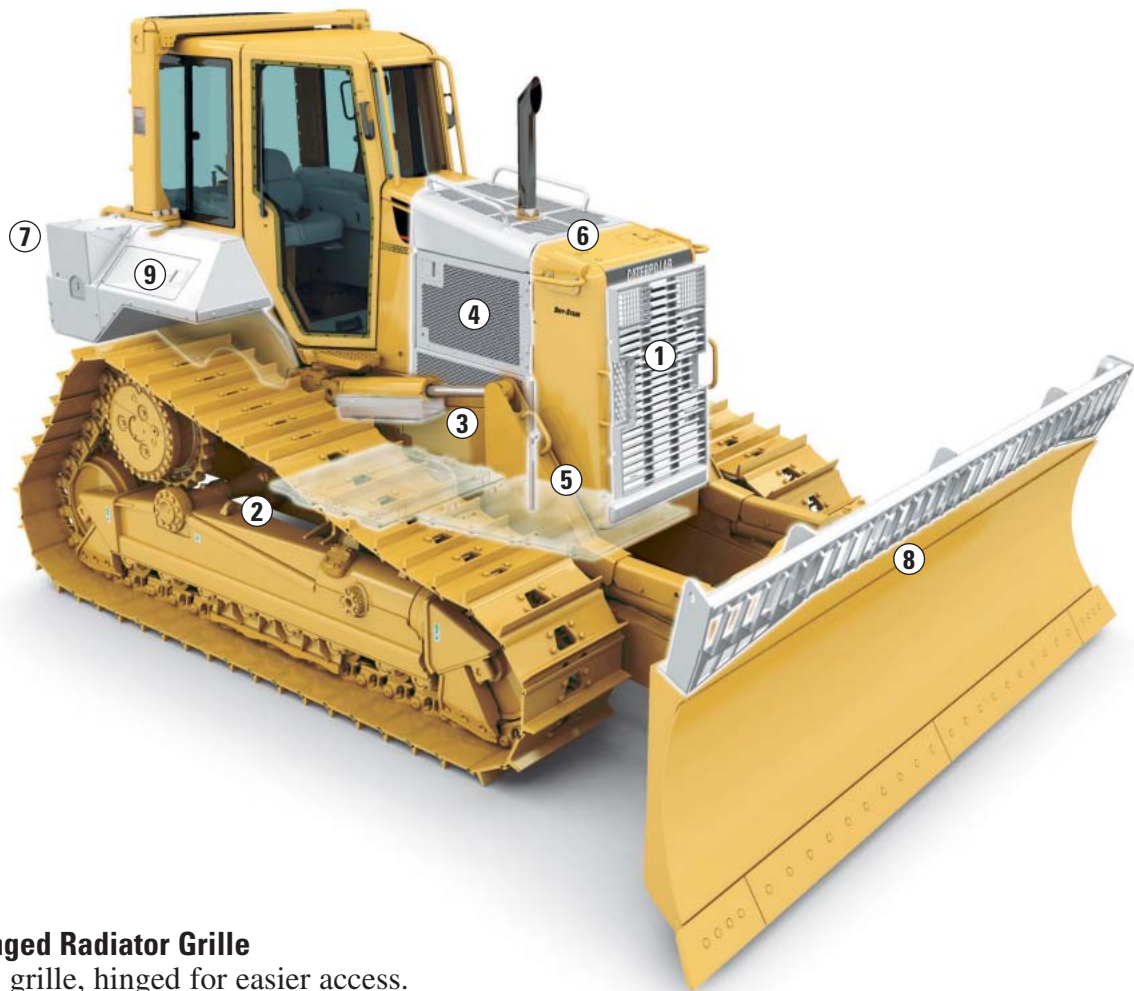
Width of Shoe – XL	600 mm	24 in
Width of Shoe – LGP	860 mm	34 in
Shoes/Side – XL	40	
Shoes/Side – LGP	46	
Track Gauge – XL	1890 mm	74 in
Track Gauge – LGP	2160 mm	85 in
Ground Contact Area – XL	3.11 m ²	4822 in ²
Ground Contact Area – LGP	5.34 m ²	8269 in ²
Track on Ground – XL	2550 mm	100 in
Track on Ground – LGP	3102 mm	122 in
Track Rollers/Side – XL	7	
Track Rollers/Side – LGP	8	

Blades

Blade Type	SU, VPAT	
XL SU – Blade Capacity with Trash Rack	6 m ³	7.8 yd ³
XL SU – Blade Width	3.19 m	10.5 ft
XL VPAT – Blade Capacity with Trash Rack	6.4 m ³	8.4 yd ³
XL VPAT – Blade Width	3.27 m	10.75 ft
LGP VPAT – Blade Capacity with Trash Rack	4.6 m ³	6 yd ³
LGP VPAT – Blade Width	4.08 m	13.4 ft

Rippers

Type	Multi-Shank, Fixed Parallelogram	
Number of Pockets	3	
Overall Width	2202 mm	86.7 in
Added Length	254 mm	0.83 ft
Maximum Clearance Raised (under tip, pinned in bottom hole)	392 mm	15.43 in
Maximum Penetration	474 mm	18.66 in
Weight – with One Shank	1406 kg	3100 lb
Each Additional Shank	78 kg	172 lb



1) Heavy-Duty Hinged Radiator Grille

Angled plate type grille, hinged for easier access. A lockable, hand-operated latch. The 45° angle of the bars diverts airflow up and away from the back of the dozer blade. The angling helps keep debris from damaging the radiator.

2) Heavy-Duty Bottom Guards

The Heavy-Duty Guards are a heavier construction for stronger protection. They prevent debris from damaging power train components and help keep debris out.

3) Lift Cylinder Lines Guards

Help protect the hydraulic tubes on the lift cylinders from damage.

4) Heavy-Duty Engine Enclosures

Perforations sized to enhance airflow while limiting debris entry. Front hinged for easy access.

Note: If Sound Suppression arrangement is ordered, the perforated doors are replaced with solid doors.

5) Debris Guards

Several debris guards are added to prevent damage to sheet metal panels from debris carried by the track.

6) Perforated Hood

Perforations sized to enhance airflow while limiting debris entry.

7) Heavy-Duty Hydraulic Tank Guard

A hinged cover to protect the filter housing and fill spout.

8) Trash Rack

(optional – LGP version shown)

- Increase dozing capacity in trash applications.
- Helps prevent trash from spilling over the blade.
- Open design maximizes visibility. (viewing area to the front)

9) Heavy-Duty Battery Box and Sheet Metal

Thicker steel for more structural strength.

Trash Resistant Cooling System (required – not shown)

- Wider 6 fins/inch spacing.
- Allows longer run time between cleanouts.
- Easier to keep clean.



10) Heavy-Duty Fenders

- Twice as thick as standard fenders.
- Includes edge protection for sheet metal panels.
- Maintains serviceability.

11) Heavy-Duty Latches

On sheet metal access panels and engine enclosures.

12) Heavy-Duty Fuel Tank Guard

- 10 mm (0.375 in) thick steel for maximum strength.
- Includes fuel fill cap protection.
- Adds additional stiffness to structures.

13) Final Drive Seal Guards

- Tightly fitted overlapping steel rings, pressed and welded to final drive hub and spindle.
- Helps keep damaging wire out of the final drive seal area.

14) Idler Seal Guards

Machined parts added to help prevent wrapping materials from damaging the idler seals.

15) Rear Striker Bar (optional)

- Rear striker bars incorporate a rigid drawbar and housing with large access doors for storage on machines not equipped with winch or ripper.
- Helps keep damaging debris from being carried by track to fender area.

16) Tilt Lines Guards (optional)

Additional guards added for bulldozer tilt lines.

17) Trapezoidal Hole Track Shoes (optional)

The trapezoidal hole track shoes reduce refuse packing within the track and chain.

18) Heavy-Duty Rear Guard (optional – not shown)

- 10 mm (0.375 in) thick steel for maximum protection.
- Lockable for vandalism protection



Waste Handling Guarding

Extensive Guarding helps protect critical machine components, body panels and the cooling system from being damaged by debris under harsh waste handling environments.

Debris Resistant Features

A debris resistant cooling system helps reduce plugging, extend service life, and enhance productivity.

Recommended Options

Several recommended options complement the Waste Handling Arrangement to ensure peak performance. These range from landfill blades and front striker bars to specially designed track shoes and hydraulic rippers. Consult your dealer for further recommendations.

Differential Steering System

Differential Steering maintains power to both tracks while turning. Operator controls machine speed, direction and steering with the tiller bar controller, while maximizing production.

Operator Station

State-of-the-art operator station has reduced sound levels, lower cab vibrations and excellent visibility. The (optional) Caterpillar comfort series air suspension seat helps reduce operator fatigue. Cab and air conditioning are standard.

Undercarriage

Elevated sprocket design isolates the final drives from ground induced impacts for excellent component life. The XL or the LGP configurations allow you to match the machine to your specific application.

Serviceability

The time between PM service intervals has increased allowing more up-time. All major components, filters, and lube points are easily accessible and modular in design. The EMS III machine monitoring system adds increased diagnostic capabilities.

Complete Customer Support

Your Cat dealer's investment in service begins with the fastest and most complete parts availability in the industry. The full range of exchange components and Caterpillar Remanufactured parts is aimed at saving you time and money, while carrying new-parts warranty.

D6N WH Waste Handler

For more complete information on Cat products, dealer services,
and industry solutions, visit us on the web at www.cat.com

© 2004 Caterpillar
All Rights Reserved
Printed in U.S.A.

Materials and specifications are subject to change without notice.
Featured machines in photos may include additional equipment.
See your Caterpillar dealer for available options.

AEHQ5588 (7-04)

CATERPILLAR®